

Class Times per Session:

9:00am – 10:00am EST

10:00am – 11:00am EST

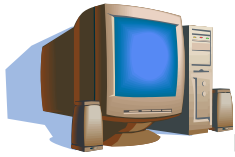
Thm.business_sem@yahoo.com



Introduction to Computers

Lesson Two: Types of computers

Personal Computers for personal use come in all shapes and sizes, from tiny PDAs (personal digital assistant) to hefty PC (personal computer) towers. More specialized models are announced each week - trip planners, expense account pads, language translators...



Descriptions of Personal Computers:

When talking about PC computers, most people probably think of the desktop type, which are designed to sit on your desk. The tower and the smaller mini-tower style cases have become popular as people started needing more room for extra drives inside.

A workstation is part of a computer network and generally would be expected to have more than a regular desktop PC of most everything, like memory, storage space, and speed.

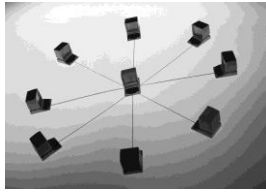
The market for the smallest PCs is expanding rapidly. Software is becoming available for the small types of PC like the palmtop (PPC) and handheld (HPC). This new software is based on new operating systems like Windows CE (for Consumer Electronics). You may find simplified versions of the major applications you use. One big advantage for the newer programs is the ability to link the small computers to your home or work computer and coordinate the data. So you can carry a tiny computer like a Palm Pilot around to enter new phone numbers and appointments and those great ideas you just had. Then later you can move this information to your main computer.

With a Tablet PC you use an electronic stylus to write on the screen, just like with a pen and paper, only your words are in digital ink. The Tablet PC saves your work just like you wrote it (as a picture), or you can let the Hand Recognition (HR) software turn your chicken-scratches into regular text.



The Main Frame:

The main frame is the workhorse of the business world. A main frame is the heart of a network of computers or terminals which allows hundreds of people to work at the same time on the same data. It requires a special environment - cold and dry.



The Server:

The term **server** actually refers to a computer's function rather than to a specific kind of computer. A server runs a network of computers. It handles the sharing of equipment like printers and the communication between computers on the network. For such tasks a computer would need to be somewhat more capable than a desktop computer. It would need:

- ❖ more power
- ❖ larger memory
- ❖ larger storage capacity
- ❖ high speed communications



The Minicomputer:

The minicomputer has become less important since the PC has gotten so powerful on its own. In fact, the ordinary new PC is much more powerful than minicomputers used to be. Originally this size was developed to handle specific tasks, like engineering and CAD calculations that tended to tie up the main frame.

Vocabulary for Lesson Two:

You will be given vocabulary periodically to add to a list of current definitions or words. It is up to you to compile the list in a format that will be easy for you to reference and understand inshaAllah.

- ✚ Personal Computer (PC)
- ✚ Personal Digital Assistant (PDA)
- ✚ Workstation
- ✚ Palmpilot
- ✚ Windows Computer Electronics (CE)

Other Words Used:

Main Frame, Server, Minicomputer, Tablet PC

Second Lesson- Listen & Take Notes

Class Assignment - Review lesson one and its vocabulary

Class Discussion – Review lesson two

Homework – review all vocabulary

Typing Assignment – Students can practice typing by using the following website <http://www.sense-lang.org/typing/> inshaAllah. Make sure to write down the time that you began and the time that you completed each lesson. Complete lessons 1 & 2. *Typing assignments are for those who wish to increase their typing skills and it is not mandatory.

Quiz 1 - Your quiz will be posted on www.thmteach.org on Thursday inshaAllah. You can take it at your leisure the same day up until 12midnight only. Sign into the website. Scroll down on the page until you see introduction to computers, use the password for the class to access the quiz.

Links Used for this Lesson:

<http://www.jegsworks.com>

<http://www.computerhope.com/jargon.htm>

<http://www.sense-lang.org/typing/>